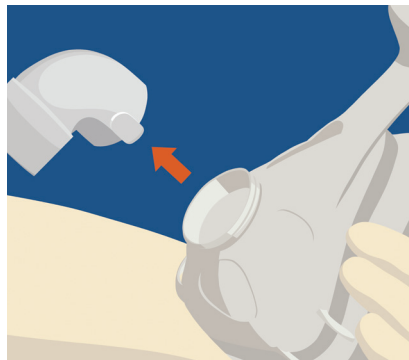


ReddyPort® non-invasive ventilation (NIV) products

In-service poster (refer to product IFUs for more detailed instructions).

ReddyPort® Elbow



SETUP: ReddyPort Elbow is compatible with Philips Respironics AF541 masks. Before placing the elbow on the mask, **PRESS** release tabs and gently pull off existing elbow.



STEP 1: PRESS ReddyPort Elbow into the faceplate hub and tug on the elbow to ensure a secure connection.



STEP 2: Following hospital protocols, fit the non-invasive ventilation (NIV) mask onto the patient.



STEP 3: Ensure separate exhalation port is placed at the 22mm connection on ReddyPort Elbow.

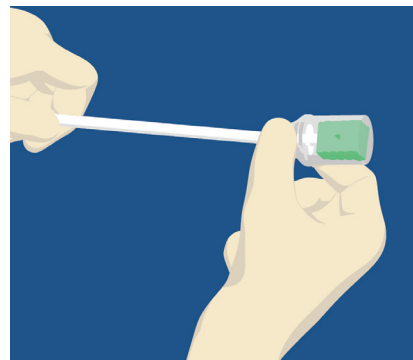
ReddyPort NIV Maintenance products: oral care and dry mouth relief for patients

WARNING: The integrated protective guard, found on every ReddyPort appliance, must be the first part inserted into the ReddyPort Elbow and the last part of the appliance to be removed. Failure to do so may result in damage to the appliances and/or a risk of a choking hazard to the patient. **DO NOT** use any appliance without the integrated protective guard.



STEP 1: MOISTEN swab or toothbrush by retracting protective guard and dipping in oral solution.

NOTE: ReddyPort NIV Maintenance products include suction swabs, toothbrushes, and yankauers. ReddyPort Swab is featured in the illustrations.



STEP 2: RETRACT swab or toothbrush into protective guard to cover it.

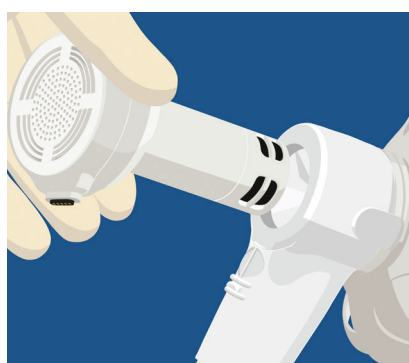


STEP 3: INSERT protective guard into elbow using figure grips. Ensure protective guard is completely inserted.



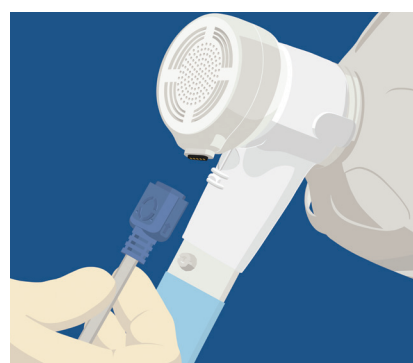
STEP 4: ADVANCE swab or toothbrush into patient's mouth gently and perform oral hygiene for 1 to 2 minutes. Suction excess fluid by placing a finger over the suction port. **REMOVE** swab or toothbrush by gently pulling on the stick to retract into protective guard. Continue pulling until device slides out of elbow.

ReddyPort Microphone and Controller: communication for patients on NIV



STEP 1: Follow ReddyPort Controller assembly and installation instructions prior to using ReddyPort Microphone and Controller. The controller uses a power supply to power the controller and microphone. Run data cable along top of circuit and using tubing clips provided, "snap" data cable into place. It is recommended that the final tubing clip be placed ~ 3-5" from the distal end of the circuit. Guide microphone through elbow with magnetic connector facing downward.

NOTE: Data cable can remain attached to the circuit when the microphone is not in use.



STEP 2: ATTACH magnetic side of ReddyPort Data Cable to microphone connector. The connector will only attach one way. If it is not connecting, simply switch its orientation.



STEP 3: PRESS the power button on controller. The green LED light will illuminate.



STEP 4: ADJUST voice level utilizing up and down buttons on controller until the patient's voice can be understood

NOTE: The volume level default is set at the middle setting.



STEP 5: When the patient is finished talking, turn off controller utilizing power button, and unplug magnetic connector side of data cable from microphone. After data cable is unplugged, remove microphone from elbow, and place it into the provided microphone mount. Set it at the patient bedside or snap the microphone mount to a Philips Clean Clip Bracket Assembly to keep it safe from contamination.

NOTE: This is a single patient use device. Dispose of after use. **DO NOT** reuse.

Please refer to product Instructions for Use (IFUs) for more detailed instructions.
For drug facts information please refer to the ReddyPort Maintenance packaging.
For any inquiries contact ReddyPort at **1.801.899.3036** or email info@reddyport.com
To view our in-service video and IFUs visit reddyport.com/resources
reddyport.com

REDDYPORT